



MINERALS DEVELOPMENT FRAMEWORKS A LOCAL PERSPECTIVE

Staffordshire
County Council

Strategic Mineral Sites in Staffordshire

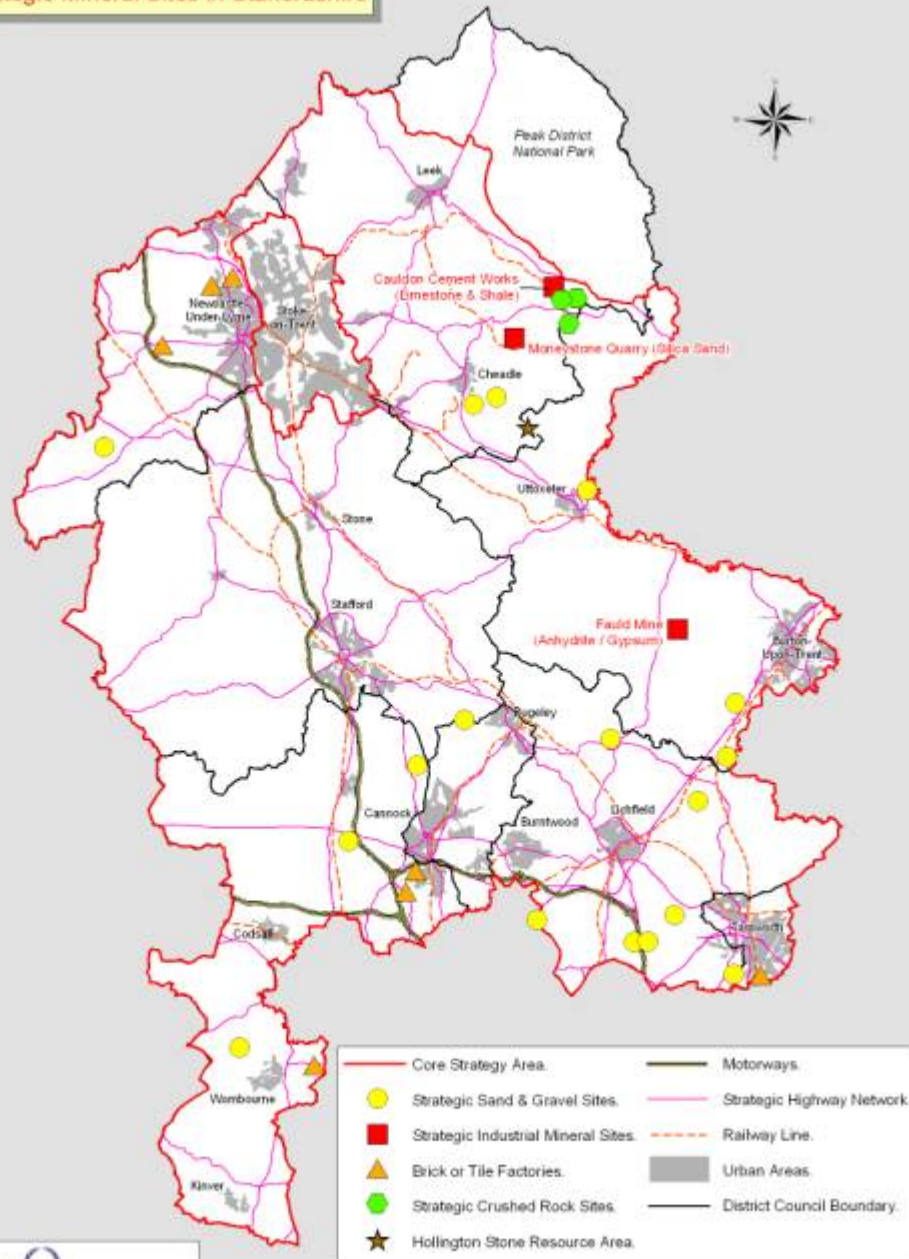
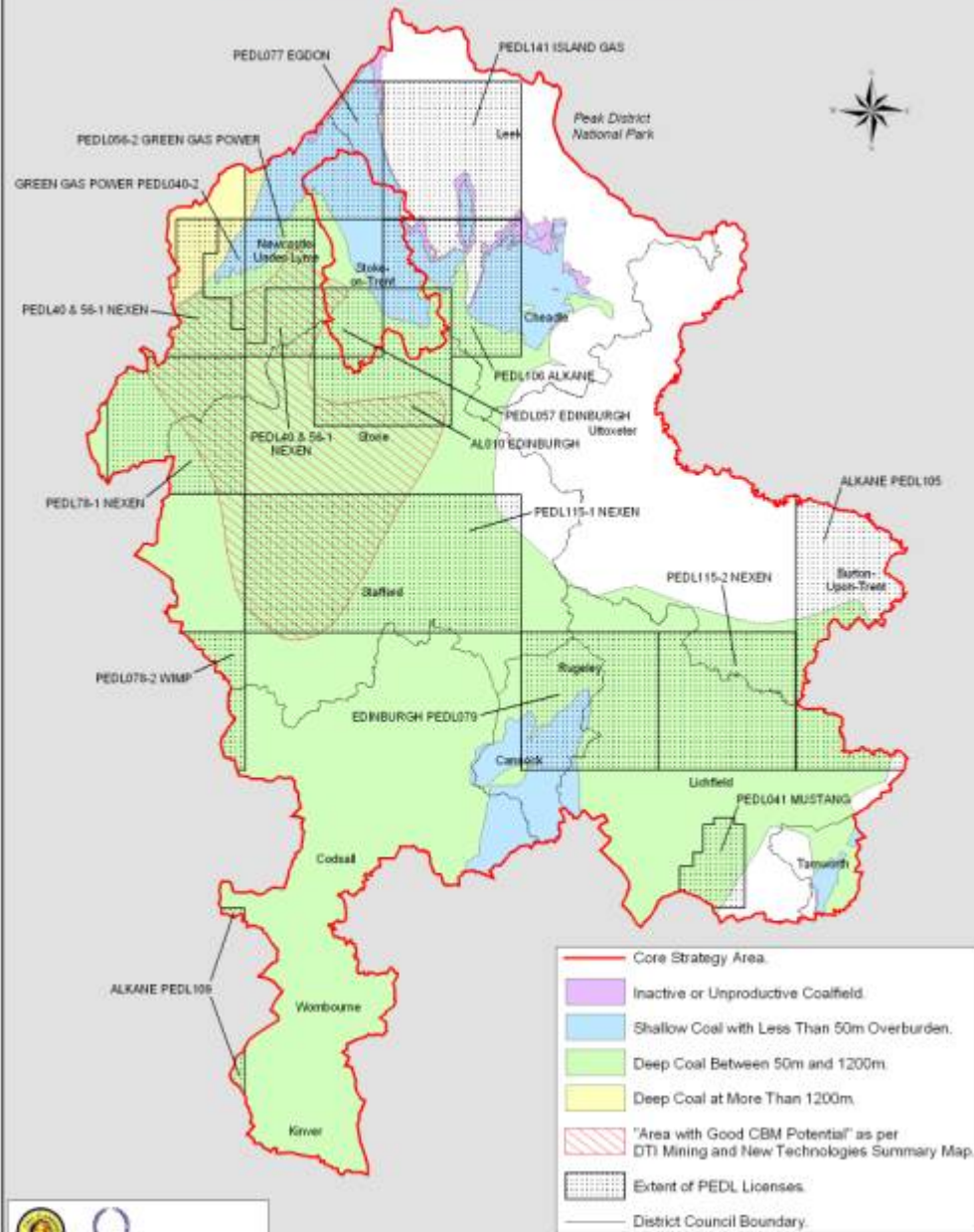
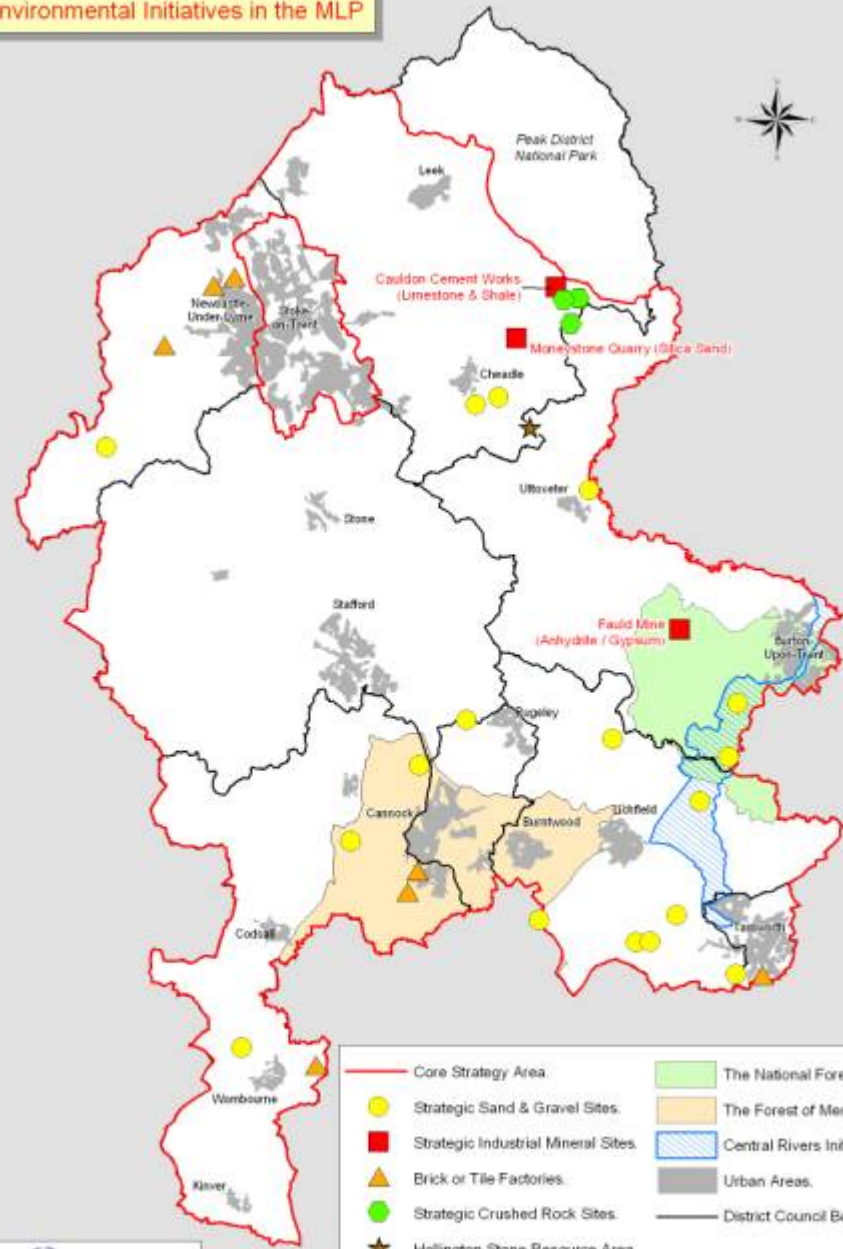


Figure 2 Extent of Hydrocarbon Resources 2007



Strategic Mineral Sites in Staffordshire & Environmental Initiatives in the MLP



- Core Strategy Area.
- Strategic Sand & Gravel Sites.
- Strategic Industrial Mineral Sites.
- ▲ Brick or Tile Factories.
- Strategic Crushed Rock Sites.
- ★ Hollington Stone Resource Area.
- The National Forest.
- The Forest of Mercia.
- Central Rivers Initiative.
- Urban Areas.
- District Council Boundary.











- Legend**
- Site boundary
 - Existing contours
 - Proposed contours based on original ground levels
 - Surrounding Existing woodland
 - On-Site Existing Woodland to be retained
 - Existing lake to be retained & enhanced with increased silt, islands and marginal shallows
 - Proposed mixed shrubs and trees by entrance
 - Surfaced access to be retained
 - Land restored to Agriculture
 - Land restored to Pasture and to include scrapes & hollows for micro habitats
 - Existing lake and surrounding margins to remain undisturbed
 - Existing hedgerow to be retained
 - New hedgerow to be planted
 - Existing soil bund to be retained (undisturbed)

REV	AMD	NOTES	DATE
C	LMB	Non-compliance as per comments from the Environment Agency	06/06/2007

DRAWING STATUS	
DRAFT	
PROJECT	
Elford Quarry	
CLIENT	
JPE Holdings Ltd	
TITLE	
Restoration Proposals	
DATE	SCALE
March 2006	1 : 2500 @A1
DRAWN	CHECKED
LMB	RJS
DRAW NO.	REVISION
ELF/01	C

Schedule of Planting for Elford Quarry Pastoralists

WOODLAND AREA

Species code	Plant name	Plant code	Plant name	Plant code	Plant name
W1	W1	W2	W2	W3	W3
W4	W4	W5	W5	W6	W6
W7	W7	W8	W8	W9	W9
W10	W10	W11	W11	W12	W12
W13	W13	W14	W14	W15	W15
W16	W16	W17	W17	W18	W18
W19	W19	W20	W20	W21	W21
W22	W22	W23	W23	W24	W24
W25	W25	W26	W26	W27	W27
W28	W28	W29	W29	W30	W30
W31	W31	W32	W32	W33	W33
W34	W34	W35	W35	W36	W36
W37	W37	W38	W38	W39	W39
W40	W40	W41	W41	W42	W42
W43	W43	W44	W44	W45	W45
W46	W46	W47	W47	W48	W48
W49	W49	W50	W50	W51	W51
W52	W52	W53	W53	W54	W54
W55	W55	W56	W56	W57	W57
W58	W58	W59	W59	W60	W60
W61	W61	W62	W62	W63	W63
W64	W64	W65	W65	W66	W66
W67	W67	W68	W68	W69	W69
W70	W70	W71	W71	W72	W72
W73	W73	W74	W74	W75	W75
W76	W76	W77	W77	W78	W78
W79	W79	W80	W80	W81	W81
W82	W82	W83	W83	W84	W84
W85	W85	W86	W86	W87	W87
W88	W88	W89	W89	W90	W90
W91	W91	W92	W92	W93	W93
W94	W94	W95	W95	W96	W96
W97	W97	W98	W98	W99	W99
W100	W100	W101	W101	W102	W102
W103	W103	W104	W104	W105	W105
W106	W106	W107	W107	W108	W108
W109	W109	W110	W110	W111	W111
W112	W112	W113	W113	W114	W114
W115	W115	W116	W116	W117	W117
W118	W118	W119	W119	W120	W120
W121	W121	W122	W122	W123	W123
W124	W124	W125	W125	W126	W126
W127	W127	W128	W128	W129	W129
W130	W130	W131	W131	W132	W132
W133	W133	W134	W134	W135	W135
W136	W136	W137	W137	W138	W138
W139	W139	W140	W140	W141	W141
W142	W142	W143	W143	W144	W144
W145	W145	W146	W146	W147	W147
W148	W148	W149	W149	W150	W150
W151	W151	W152	W152	W153	W153
W154	W154	W155	W155	W156	W156
W157	W157	W158	W158	W159	W159
W160	W160	W161	W161	W162	W162
W163	W163	W164	W164	W165	W165
W166	W166	W167	W167	W168	W168
W169	W169	W170	W170	W171	W171
W172	W172	W173	W173	W174	W174
W175	W175	W176	W176	W177	W177
W178	W178	W179	W179	W180	W180
W181	W181	W182	W182	W183	W183
W184	W184	W185	W185	W186	W186
W187	W187	W188	W188	W189	W189
W190	W190	W191	W191	W192	W192
W193	W193	W194	W194	W195	W195
W196	W196	W197	W197	W198	W198
W199	W199	W200	W200	W201	W201
W202	W202	W203	W203	W204	W204
W205	W205	W206	W206	W207	W207
W208	W208	W209	W209	W210	W210
W211	W211	W212	W212	W213	W213
W214	W214	W215	W215	W216	W216
W217	W217	W218	W218	W219	W219
W220	W220	W221	W221	W222	W222
W223	W223	W224	W224	W225	W225
W226	W226	W227	W227	W228	W228
W229	W229	W230	W230	W231	W231
W232	W232	W233	W233	W234	W234
W235	W235	W236	W236	W237	W237
W238	W238	W239	W239	W240	W240
W241	W241	W242	W242	W243	W243
W244	W244	W245	W245	W246	W246
W247	W247	W248	W248	W249	W249
W250	W250	W251	W251	W252	W252
W253	W253	W254	W254	W255	W255
W256	W256	W257	W257	W258	W258
W259	W259	W260	W260	W261	W261
W262	W262	W263	W263	W264	W264
W265	W265	W266	W266	W267	W267
W268	W268	W269	W269	W270	W270
W271	W271	W272	W272	W273	W273
W274	W274	W275	W275	W276	W276
W277	W277	W278	W278	W279	W279
W280	W280	W281	W281	W282	W282
W283	W283	W284	W284	W285	W285
W286	W286	W287	W287	W288	W288
W289	W289	W290	W290	W291	W291
W292	W292	W293	W293	W294	W294
W295	W295	W296	W296	W297	W297
W298	W298	W299	W299	W300	W300

Notes:

1. All plants will be from British sources (see page 14 of JPE 01) - unless otherwise stated in separate schedule or if otherwise agreed in writing between JPE and the contractor.
2. All plants to be planted with suitable spacing and orientation.
3. All plants to be planted with suitable orientation and spacing.

Contractor's duties and responsibilities:

The contractor shall be responsible for the following:

1. To ensure that all plants are planted in accordance with the schedule of planting and the planting plan.
2. To ensure that all plants are planted in accordance with the schedule of planting and the planting plan.
3. To ensure that all plants are planted in accordance with the schedule of planting and the planting plan.
4. To ensure that all plants are planted in accordance with the schedule of planting and the planting plan.
5. To ensure that all plants are planted in accordance with the schedule of planting and the planting plan.
6. To ensure that all plants are planted in accordance with the schedule of planting and the planting plan.
7. To ensure that all plants are planted in accordance with the schedule of planting and the planting plan.
8. To ensure that all plants are planted in accordance with the schedule of planting and the planting plan.
9. To ensure that all plants are planted in accordance with the schedule of planting and the planting plan.
10. To ensure that all plants are planted in accordance with the schedule of planting and the planting plan.

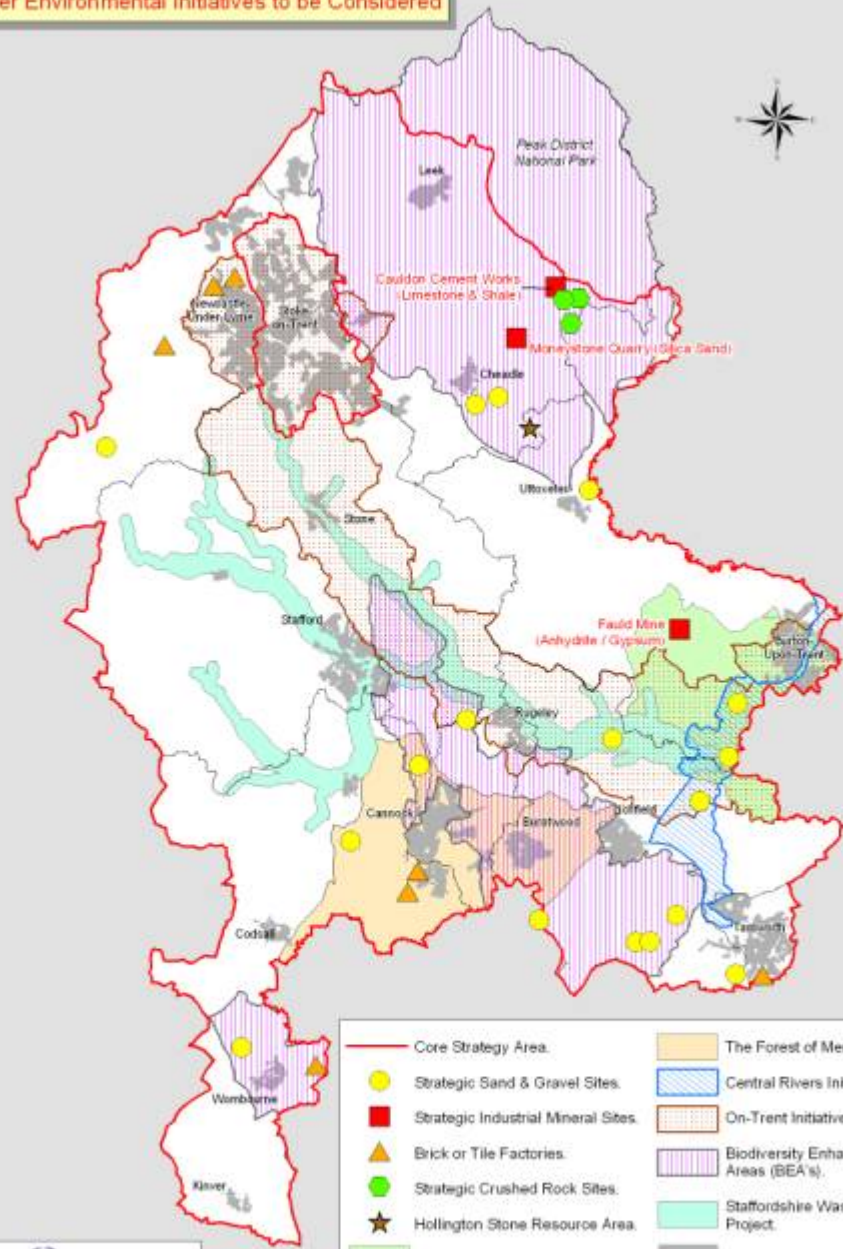


PleydellSmithyman

THIS DRAWING MAY NOT BE USED WITHOUT CONSENT OF:

PLEYDELL SMITHYMAN LIMITED
 35A THE WHARFAGE, RICHMOND
 SHROPSHIRE TF9 7NH
 T. 01952 433211 F. 01952 433333
 E. ps@pleydellsmithyman.co.uk
 www.pleydellsmithyman.co.uk

**Strategic Mineral Sites in Staffordshire
& other Environmental Initiatives to be Considered**



Core Strategy Area.	The Forest of Mercia.
Strategic Sand & Gravel Sites.	Central Rivers Initiative.
Strategic Industrial Mineral Sites.	On-Trent Initiative.
Brick or Tile Factories.	Biodiversity Enhancement Areas (BEA's).
Strategic Crushed Rock Sites.	Staffordshire Washlands Project.
Hollington Stone Resource Area.	Urban Areas.
The National Forest.	District Council Boundary.




Staffordshire
County Council

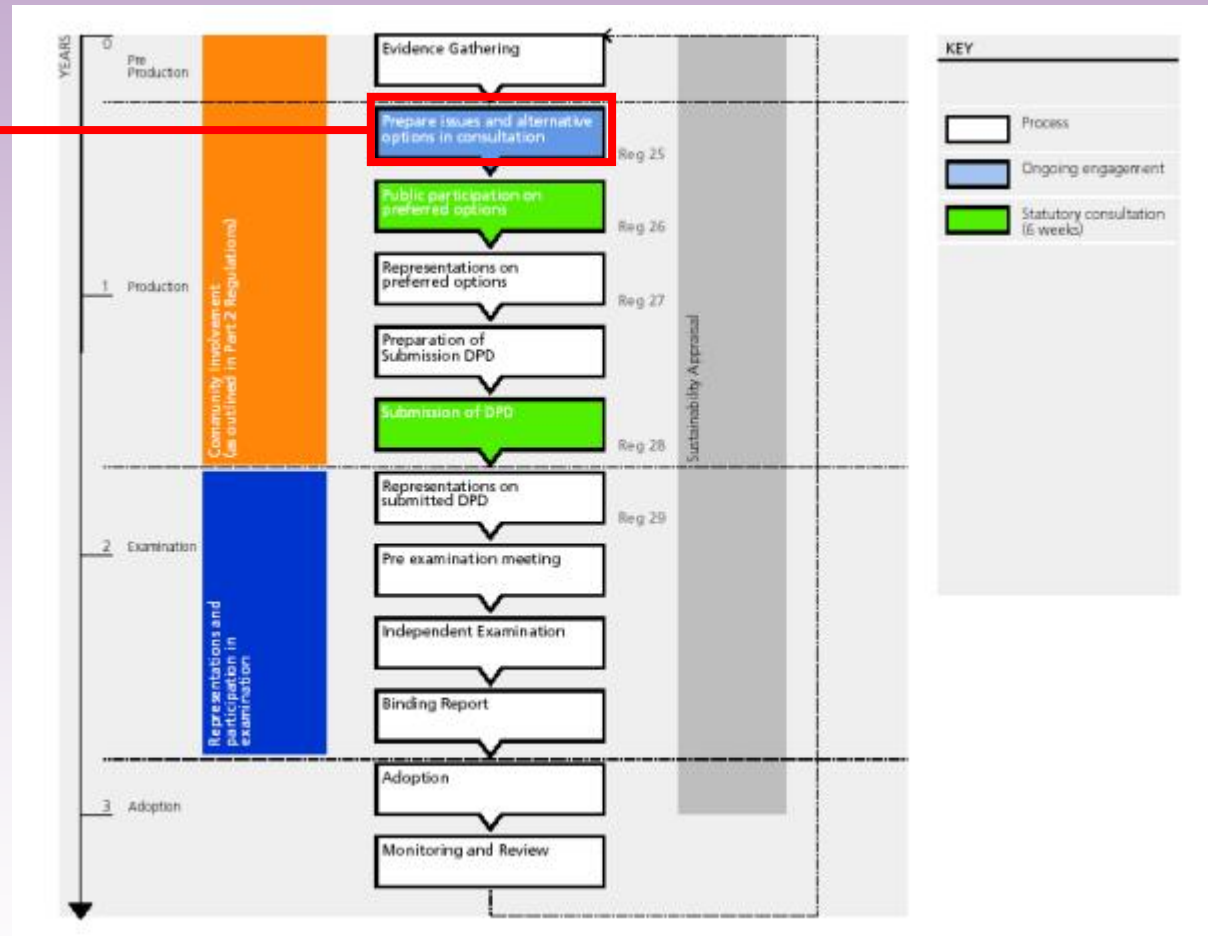
Development Control Unit
 Development Services
 Riverside, Gifford, ST16 3JF
 Telephone 01882 220101
 Fax 01882 311039

Scale - 1:350,000

* This map is reproduced from Ordnance Survey material with the permission of Ordnance Survey and held of the controller of the Map(s), Stationery Office (s). Crown Copyright. Unauthorised reproduction infringes Crown Copyright and may lead to prosecution or civil proceedings. Staffordshire County Council, L.A. 16819422

The Development Plan Document (DPD) Preparation Process

Current Stage



Development Control [Printer friendly](#)

- Staffordshire Planning Portal
- What we do
- Applications
- Policy
- Regulation



Quick Links

- [Applications](#)
- [Policy](#)
- [Regulation](#)

[Key Contacts](#)

[Find us](#)

[Portal A to Z](#)

[Applications Register](#)

[Applications making the headlines](#)

[Application forms, fees and advice](#)

[Planning Committee](#)

[Committee/Delegated Reports](#)

The Staffordshire Planning Portal will help you to access planning information about development in Staffordshire and Stoke-on-Trent.

The Portal has been organised into three channels:

- [Applications](#)
- [Policy](#)
- [Regulation](#)

[What we do](#) - explains the content of each channel

[Portal A to Z](#) is available if you are not sure which channel to use to find the planning information you are looking for.

Page Last Modified: 13/09/2007 13:21:32

[Back to top](#)

[Email a link to this page](#)